

L.A.  
THEATRE  
WORKS

LATW

PROGRAM  
2020/21 DIGITAL SEASON

sarah drew  
seamus dever  
darren richardson  
joanne whalley



# ex·tinc·tion

by hannie rayson  
directed by martin jarvis

VISIT US AT [LATW.org](https://LATW.org)

# CAST

*(in speaking order)*

SARAH DREW .....Dr. Piper Ross

SEAMUS DEVER ..... Harry Jewell

DARREN RICHARDSON .....Andy Dixon

JOANNE WHALLEY .....Professor Heather Dixon-Brown

**Directed by Martin Jarvis**



**ALFRED P. SLOAN  
FOUNDATION**

*Extinction* is part of L.A. Theatre Works' Relativity Series of science-themed plays. Lead funding for the Relativity Series is provided by the Alfred P. Sloan Foundation, bridging science and the arts in the modern world.

**Additional season funding provided by:**

California Civil Liberties Program (State Library)  
Campizondo Foundation  
City of Los Angeles, Department of Cultural Affairs  
Los Angeles County Department of Arts & Culture  
National Endowment for the Arts  
The Peter Glenville Foundation  
The Ralph M. Parsons Foundation  
The Rosalinde and Arthur Gilbert Foundation



**THE  
iNViSiBLE STUdIOS**

*Extinction* was prepared for audio by Mark Holden for The Invisible Studios, West Hollywood.

## Playwright's Note

I've always wanted to write about environmental issues, without writing an "issues" play. By that I mean, the kind of theatre that is strangulated by its own ideological imperative to teach audiences lessons. I hate that kind of theatre.

In those type of "enviro-plays" there are only two types of people: good guys (conservationists) and bad guys (big business).

But life is not binary. There are more than two positions in every conflict.

In this play I ask what if a coal mining executive was a conservationist? What would happen if I created a charismatic, charming guy working in an industry which is a major emitter of greenhouse gases. What would he have to do to make a committed ecologist fall in love with him?

Maybe he could put two million dollars on the table to kick start a biodiversity project.

This is a play that implicates everyone in big ethical questions of how we are to live in the age of global warming.

Morality is not a straightforward business, especially when you factor in basic drives like ambition, prejudice, idealism and sexual desire. Everything which makes us human.

This is a story about real people of good will, facing real decisions and real choices which implicate us all.

- Hannie Rayson

## Bios



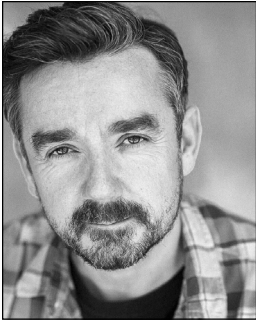
**SEAMUS DEVER** (*Harry Jewell*) is best known to television audiences as Detective Kevin Ryan on ABC's *Castle*. Dever recently appeared in DC's *Titans* where he originated the role of the super-villain, Trigon. He also lent his bad guy prowess to the role of John Seed in the hit video game *Far Cry 5*. He previously appeared with LATW in *I Love Lucy: A Funny Thing Happened on the Way to the Sitcom*, *Between Riverside and Crazy*, *The Assembled Parties*, *Mary Stuart*, *The*

*Hound of the Baskervilles*, and *The Tug of War*. Past Los Angeles theatre includes *The Abuelas* at The Antaeus Theatre, *Twelve Angry Men* at The Laguna Playhouse, *iWITNESS* at The Mark Taper Forum, and *A Clockwork Orange* at the Greenway Court Theatre. Dever lives in West Hollywood with his wife, Juliana and his three adorable dogs. He enjoys traveling, wine, and carpentry.



**SARAH DREW** (*Dr. Piper Ross*) is an American actress, best known as Dr. April Kepner on ABC's *Grey's Anatomy*, Hannah Rogers on WB's *Everwood*, and the voice of Stacy Rowe on MTV's *Daria*. Other television credits include: *Supernatural*, *Glee*, *Mad Men*, *In Plain Sight*, *Castle*, *Private Practice*, *Medium*, as well as the recent CBS pilots *Cagney and Lacey* (as Cagney), and *The Republic of Sarah* (as Sarah Cooper). Film credits include: *Moms' Night Out*,

*Tug*, *Front of the Class*, *American Pastime*, *The Baxter*, *Radio*, *Indivisible*, *Christmas Pen Pals*, and *Twinkle all the Way*. Theatre credits include her Broadway and West End debut as Eugenie Loyer in *Vincent in Brixton* (John Golden Theater/The Ambassador Theatre Group), and regionally as Ellie Dunn in *Heartbreak House* (Berkshire Theater Festival), Emily Imbrie in *Third* (Geffen Playhouse), and Juliet in *Romeo and Juliet* (McCarter Theatre). Drew can next be seen in the upcoming holiday movie, *Christmas in Vienna* premiering November 14th on Hallmark Channel. She resides in Los Angeles with her husband Peter, children Micah and Hannah, and rescue dog, Lucy. This is Drew's 8th LATW production and she is thrilled to be back diving into this fantastic play!



**DARREN RICHARDSON** (*Andy Dixon*)

Darren Richardson has appeared in countless L.A. Theatre Works productions. Highlights include the national tours of *Judgement at Nuremberg*, *In the Heat of the Night*, *Pride and Prejudice*, *The Graduate*, and LATW's China tour of *Top Secret: The Battle for the Pentagon Papers*, the first American play performed at the Beijing National Grand Theatre. Darren's long association with Jarvis and Ayres productions has led to over 40 radio plays for the BBC. TV work includes *Hawaii Five-0*, *This Is Us*, *The Last Tycoon*, *Great News*, *Lost*, and soon to be released *The Baxters* and Ryan Murphy's 'Hollywood.' Recent films include: *The Persian Connection*, *The Meanest Man in Texas*, and *Velvet Buzzsaw* opposite Jake Gyllenhaal. He recently completed filming the eagerly awaited Glen Danzig vampire western! His voice talents are often heard in films and TV shows such as *LEGO 2*, *Black Panther*, *Mad Max*, *Transformers*, *Shrek*, *Guardians of the Galaxy*, and the *Pirates of the Caribbean* franchise. Follow his exploits on Instagram @thedazdazzler.



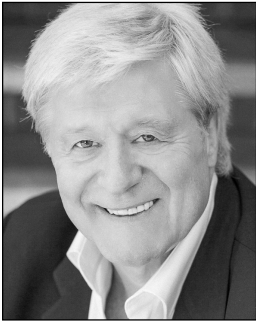
**JOANNE WHALLEY** (*Professor Heather Dixon-Brown*) is an English theatre, television, and film actress, known for *Scandal*, *The Man Who Knew Too Little*, *Navy Seals*, *Willow*, and *Pink Floyd The Wall*. Other film credits include *Shattered*, *Dance with a Stranger*, and *No Surrender*. Television credits include Mary James in Sky's *Tin Star*, *Sister Maggie* in Marvel's *Daredevil*, Margaret in Starz's *The White Princess*, Vanozza Cattaneo on Showtime's *The Borgias*,

Princess Sophie Grimaldi on CW's *Gossip Girl*, Sarah Hughes/Marjorie Dawson on YTV's *How We Used to Live*, Angela Read on YTV's *Emmerdale*, and Pamela Graham on ITV's *Coronation Street*. Television miniseries credits include Rheda in ITV's *Beowulf: Return to the Shieldlands*, Katherine of Aragon in BBC's *Wolf Hall*, Aunt Patience in BBC's *Jamaica Inn*, Scarlett O'Hara in TF1's *Scarlett*, Beatrice in Channel 4's *A TV Dante*, Nurse Mills in BBC's *The Singing Detective*, Emma Craven in BBC's *Edge of Darkness*, and Ingrid Brown/Rothwell in Granada Television's *A Kind of Loving*. Off-Broadway theatre credits include Geraldine Barclay in *What the Butler Saw* (N.Y.C. Center Stage).



**HANNIE RAYSON** (*Playwright*) is an Australian playwright, screenwriter and newspaper columnist. She is the author of sixteen plays including *Hotel Sorrento*, *Falling from Grace*, *Scenes from a Separation* (co-written with Andrew Bovell), *Life After George*, *Inheritance*, *Two Brothers*, *The Glass Soldier*, *The Swimming Club*, *Extinction*, and *Noah's Daughter*. *Extinction* was commissioned by The Manhattan Theatre Club in New York through the Alfred

P. Sloan Foundation. She has been performed throughout Australia at all the major theatre companies. Internationally her plays have been staged in London's West End, The New National Theatre of Tokyo, The New Kobe Oriental Hall, Japan, Helsinki City Theatre, The Centaur in Montreal, The National Theatre of Slovenia and many theatres in the UK, Europe and New Zealand. Hannie's plays have won AWGIE Awards; Green Room Awards; Helpmann Awards; NSW Premier's Literary Awards; Victorian Premier's Literary Awards and the Age Performing Arts Award. *Life After George* was the first play ever to be nominated for the prestigious Miles Franklin Award. Hannie's memoir, *Hello, Beautiful!* was published by Text Publishing in February 2015. She adapted the story for a one-woman show, which she performed also called *Hello, Beautiful!* which opened at The Malthouse Theatre in May 2016 and toured nationally to 37 theatres. Hannie also writes for newspapers and magazines and in 1999 she won the Magazine Publishers' Society of Australia, Columnist of the Year Award. Her television scripts include *Sloth* (ABC, *Seven Deadly Sins*) and she co-wrote two episodes of the award-winning series *Seachange* (ABC/Artists Services). A feature film of *Hotel Sorrento* (1995) was nominated for ten Australian Film Institute Awards, winning two, including Best Screenplay adaptation.



**MARTIN JARVIS** (*Director*) British actor/director Martin Jarvis starred (with Rosalind Ayres) in the recently acclaimed West End revival of *The Importance of Being Earnest*. He received the Theatre World Award for his performance as 'Jeeves' on Broadway. Martin says: 'Extinction was a joy to direct, with supremely imaginative acting from its starry cast.' As director for L.A. Theatre Works, Martin's productions encompass world-class

international dramas: *God of Carnage*, *Pressure*, *Fathers and Sons*, *Henceforward*, *Lenin's Embalmers*, *Spill*, *Copenhagen*, *Galileo*, *The Rivals*, *She Stoops to Conquer* and many star-studded Shakespeare recordings. His acting appearances for LATW cover *Shadowlands*, *Racing Demon*, *The Browning Version*, *Uncle Vanya*, *The Guilty Mother*, *You Never Can Tell* and comedies by Ayckbourn and Frayn. In the UK Martin has spearheaded West End and National Theatre plays and directed many BBC dramas, notably an award-winning *A View from the Bridge* with Alfred Molina and Jane Kaczmarek. Plus *Goldfinger* starring Ian McKellen, *Monologues* with Judi Dench and Helen Mirren, *Lady Windermere's Fan* with Mira Sorvino. Martin remarks, 'I have the doubtful distinction of appearing in the highest grossing movie of all time, *Titanic*, and the lowest, *United Passions!*' Other movies: *Girl with the Dragon Tattoo*, *Phil Spector*, *Wreck-It Ralph*, *The Bunker*, *Buster*, *Taste the Blood of Dracula*, *The Last Escape*. TV includes: *Doctor Who*, *Law & Order*, *Election Spy*, *Endeavour*, *Eastenders*, *Taking the Flak*, *The Story of Messiah* (PBS), *Funny or Die*, *Cosmos*, *Numb3rs*, *Stargate Atlantis*, *Murder She Wrote*, *David Copperfield*, *Nicholas Nickleby*, *Walker Texas Ranger*, *Marple*, *Poirot*, *Morse*, *The Forsyte Saga*. His countless audiobooks include P.G. Wodehouse, Michael Frayn and *Just William* titles and whizz-bang thrillers. Video games: 'Alfred' in *Batman* and 'Finn McMissile' in *Cars 2*. Martin is invested by HM the Queen as Officer of the British Empire (OBE) for his services to Drama.

**SUSAN ALBERT LOEWENBERG** (*Producing Director*) is founder and Producing Director of L.A. Theatre Works, a non-profit media arts and theatre organization. Ms. Loewenberg has produced award-winning radio dramas, plays, and films in Los Angeles, New York, Chicago, and London. Under her supervision, LATW has created the largest library of plays on audio in the world, garnering numerous awards from the Corporation for Public Broadcasting, the Writers Guild, The American Library Association, Publishers' Weekly, and others. Ms. Loewenberg also serves as host and is the Executive Producer of LATW's nationally distributed syndicated radio series, "L.A. Theatre Works," broadcast on NPR stations nationwide. A graduate of Sarah Lawrence College, she has served on innumerable boards and panels, including the National Endowment for the Arts, California Arts Council, The Fund for Independence in Journalism in Washington D.C., and was co-chair of the League of Producers and Theatres of Greater Los Angeles. From 1996-2002, Ms. Loewenberg served during the Clinton administration on the Board of Directors for Federal Prison Industries, a presidential appointment, and served for several years as a member of the regional panel of the President's Commission on White House Fellows. She is currently a member of the Board of Directors of The Center for Public Integrity and a Fellow of the Los Angeles Institute for the Humanities at USC. Ms. Loewenberg is the author of a number of articles that have appeared in *American Theatre Magazine*, *The Los Angeles Times*, and various professional journals.

**ANNA LYSE ERIKSON** (*Producer*) is the Associate Artistic Director at L.A. Theatre Works, having served as point producer, casting director, and literary manager for over 100 L.A. Theatre Works live recordings, in-studio recordings, and tours. Producing highlights: *A Walk in the Woods* (Earphones Award 2019, Audiofile Magazine's Best Audio Books 2019), *Disgraced* (Audie Award Nominee 2018), and the critically acclaimed 2014-15 National Tour of *In the Heat of the Night*. Directing credits include: *Mary Shelley's Frankenstein* (L.A. Theatre Works), *Circle Mirror Transformation* (The Workroom), *A Night With Tennessee Williams* (University of Colorado-Boulder), *Rose* (University of Missouri-Columbia). She was previously a founder and Artistic Director of VAGABOND, Director of Development for the Morgan-Wixson Theatre, Director of Outreach and Development for Independent Actors Theatre, and a casting director and producing consultant for various commercial, film, theatre, and audio drama projects. Anna Lyse received a B.A. in Theatre Performance from the University of Missouri-Columbia, and an M.A. in Theatre History, Theory, and Criticism from the University of Colorado-Boulder, both with highest honors.

**RONN LIPKIN** (*Senior Radio Producer*) After graduating from Haverford College with a BA in Music History, Ronn worked as a staff announcer and production director for WYSP-FM in Philadelphia, helping to create the legendary rock station's distinctive sound. He later moved to KLSX-FM in Los Angeles and worked as a staff announcer, recording engineer and producer, creating award-winning radio commercials for national and regional clients. For L.A. Theatre Works, he serves as music supervisor for live productions, lead podcast and radio producer, and curator for the company's audio library. He is also an editor and creative consultant for a number of leading audiobook publishers.

**MARK HOLDEN** (*Owner, The Invisible Studios*) has over two decades of experience producing, recording and mixing various creative projects in studios, on sets, and on live stages. He has designed, recorded and mixed over 250 plays, live shows and national tours for L.A. Theatre Works, the BBC and dozens of production houses, arts organizations and podcast companies. As a composer and producer, Mark understands that communication and comfort are essential to a creative space, which is why he created The Invisible Studios in West Hollywood, CA. This commercial production and post-production environment is home base for the many projects overseen by Mark and his team. Using his adapting, consulting and project management experience, he helps both new and established dramas take flight in the audio drama renaissance. Most recently Mark directed and produced *Dust: Horizons* for Gunpowder & Sky. He has composed for radio, film, and television such as scoring the award-winning feature film *Out in the Dark*. Additionally, he has written, produced, and engineered for several genres of music and worked with some of the biggest names in commercial and creative voice talent. Mark currently serves as board chair of Rogue Artists Ensemble: [rogeartists.org](http://rogeartists.org). Learn more about Mark and his team at: [theinvisiblestudios.com](http://theinvisiblestudios.com).



**THE  
iNViSiBLE STUDIoS**

**NEIL WOGENSEN** (*Recording Engineer, Editor, and Sound Designer*) is a Los Angeles based recording engineer, music producer, and sound designer with over 7 years of experience. From producing full length albums to sound designing feature length audio dramas, he believes in capturing the truth in every story.

**JEFF GARDNER** (*Sound Effects Artist*) has performed live sound effects with LATW over the last eight seasons. Highlights include: *Amadeus*, *American Buffalo*, *As You Like It*, *Under Milk Wood*, *August: Osage County*, *The Motherf\*\*ker with the Hat* as well as touring nationally with *Judgment at Nuremberg*. Jeff is an actor/sound designer born and raised in Los Angeles. Sound design credits: include *Native Son*, *Cat on a Hot Tin Roof*, *Picnic* (Antaeus Theatre Company); *Punkplay*, *Trevor* (Circle X Theatre); *American Saga: Gunshot Medley*, *Les Blancs*, *Honky* (Rogue Machine); *The Wolves*, *The Cake*, *Dry Land* (Echo Theater), as well as *Buried Child*, *A Raisin In The Sun*, *The Madwoman of Chaillot* (A Noise Within). Acting credits include: *The Liar*, *Macbeth*, *King Lear* (Antaeus Theatre Company); *Little Women* (Kennedy Center, National Tour); *Henry V* with Harry Hamlin (The Shakespeare Theatre); *Our Town* with Calista Flockhart, and *The Seagull* with Gwyneth Paltrow and Christopher Walken (Williamstown Theatre Festival). Jeff has also toured with his award-winning solo show, *Kill Your Television* for the Seattle Fringe and Hollywood Fringe Festivals.

### **Special Thanks:**

**CHARLES CARROLL** (*Mixer*)

**TITO H. SALAZAR** (*The Invisible Studios Coordinator*)  
Certified Covid-19 Compliance Officer

# LATW Supporters

## **Platinum Circle** (\$100,000+)

Alfred P. Sloan Foundation

## **Gold Circle** (\$50,000 - \$99,999)

The Ahmanson Foundation

California Civil Liberties Program (State Library)

Marcy Carsey

Los Angeles County Department of Arts & Culture

NoVo Foundation

## **Executive Producers** (\$25,000 - \$49,999)

California Arts Council

City of Los Angeles, Department of Cultural Affairs

Beth & Michael Kasser

John Logan/Desert Wolf Productions

National Endowment for the Arts

The Ralph M. Parsons Foundation

## **Producers** (\$10,000 - \$24,999)

Anonymous

Campizondo Foundation

Patty Glaser & Sam Mudie

Heather & Paul Haaga

Robin & Gary Jacobs

Jamie Wolf

## **Co-Producers** (\$5,000 - \$9,999)

Mary K. & Thomas S. Bagley Foundation

Catherine Glynn Benkaim & Barbara Timmer

Nancy Englander

Sherry Bebitch Jeffe

Lyn & Norman Lear

Lillian Lovelace

**Associate Producers** (\$2,500 - \$4,999)

Dan & Rae Emmett, Emmett Foundation

Sharon & Steven Erikson

The Rosalinde and Arthur Gilbert Foundation

Peter Glenville Foundation

Cragg Hines & Robert B. Crane - in memory of Doug Jeffe  
and in honor of Sherry Bebitch Jeffe

Eileen Lawrence

Linda Lichter & Nick Marck and Lichter, Grossman, Nichols, Adler,  
Feldman & Clark, Inc.

Susan Albert Loewenberg & Ezra Suleiman

Debbie & Gregg Oppenheimer

Suellen Richmond

Ariane & Lionel Sauvage

Bill Schneider

Beegie Truesdale & Bill Carrick

Weingart Foundation

Williams/Pasquin Trust

**Sustaining Patrons** (\$1,000 - \$2,499)

Elizabeth & Louis Altman

Anonymous

Daniel Castellaneta & Deborah Lacusta

Tallie & George Dennis

Elisabeth Familian

Alan Finkel

Ann & Kevin Harrang

Simon Helberg & Jocelyn Towne

Carrie Hidding/teamCFO

Raquel & Bert Lewitt

Anne & Barry Munitz

Shvetal & Raj Patel

Beverly & Norman Pine

David Rambo & Ted Heyck

The Rosenthal Family Foundation

Dr. Donald Ross & Patti Ross - in honor of Susan Loewenberg  
& entire LATW staff

Tony Silbert/Silbert Consulting

Valerie Sopher

Andrea Weiss & Dr. Jerry Whitman

Dan White

**Ensemble Patrons (\$500 - \$999)**

Debra & Dave Alpert  
David Auburn  
Jim Bagley  
Barbara Berg  
Judith Blumenthal  
Paula Brand  
David Braun  
Laurie Cohn  
Gina & John Despres  
Sarah Dusseault  
Nancy Englander  
Eric Engel & Ronda Fox  
The Finzen - Clark Family Foundation  
Nan & Allan Goodman  
Marilyn & Barry Hinden  
Mark Holden  
Martin Jarvis & Rosalind Ayres  
Jane Jelenko  
Peter Kazaras & Armin Baier  
The Keach Family  
Dr. Leonard & Stella S. Kleinrock  
Valerie & Dr. Jack Melmed  
Sarah Morris & John Papadopoulos  
Micheline Nanterre  
Judith Pacht & Dr. H. Kenneth Fisher  
Vicki Pearlson  
Joyce Rey  
Steven Ross & Linda Kent  
David & Chip Selby  
Christina Snyder & Marc Seltzer  
Valerie Sopher  
Joan & Robert Stern  
Taffy Stern  
Sophie Suleiman  
Sandy & Jon Willen - in honor of Susan Loewenberg  
January & Edward Woods

**Patrons** (\$250 - \$499)

Anonymous

Rick Albert

Paul Ashkenaz

Richard Dickman

Leilani Duke

Betsy & Bob Eaton - in memory of Doug Jeffe

Nancy & George Franko

Cindy & Ron Furst

Suzanne Gallant

Pamela Gilbert & Charles Lewis

Judy & Jeff Harris

Marcia Jones & George Arias

Jane Kaczmarek

Cathryn & Barry Kaye

Sharon Keith

Barbara & Bob Klein

Eileen & James Krause

Charles G. Kristenson

Yvette & Ellis Landau

Paula A. Levine & Bernard D. Beitman

Renee & Sid Lewis

Steven Llanusa

Lawrence Lokman & Rhonda Seaton - In memory of Doug Jeffe

Mr. & Mrs. Gary Marsh

Allison Morse & Jeffrey Masters

Lenore Neidorf

Susana Nierlich

Diane Corwin Okarski & David Okarski - In memory of

Norman Corwin & Katherine Locke Corwin

Michael R. Oppenheim

Jennifer N. Owens-Ornellas & Jay T. Ornellas

Lee Ramer

Ron Rapoport

Allen Resnick

David Rodes

Gayle and Lee Rodgers - in honor of Sherry Jeffe

David Rodin & Javier Cardenas

Dr. Bushra Rothstein

Peggy Saferstein

Patti & Jack Schwellenbach

Peter Sego

Helene Smookler  
Louise Spitzer  
Simon & Rosalind Templeman  
Catherine & Len Unger  
Sue & Doug Upshaw  
Tom Virtue  
Susan L. Wampler & Stan Wedeking  
Dorothy Wolpert  
Sallie Zemlin-Kisor and Robert Kisor

**Friends** (\$100 - \$249)

Florence C. Agcawili  
Ellen Albert & David Griggs  
Jan Amsterdam  
Anonymous  
Albert Aubin  
Joan August  
June Bartczak  
Joan Barton  
Frank Belz & Judy Kerner  
Shelley K. Booker  
Ahuva Braverman  
Deidre Bronchick  
Dana Brown  
Constance Burg  
Carryl Carter  
Lynn Christian  
Michele Cobb  
Dr. & Mrs. Kenneth Cohn  
Laurie Cohn  
Diane Corwin Okarski & David Okarski  
Charles L. Cron  
Christy Daily & Robert Fajardo  
Lawrence Davis  
Judith De Luce  
Jerry and Patty Dicker  
Lauren Donner  
Anne Dougherty & David Dobrikin  
Ronald Evett  
Rena & Peter Falk  
Geraldyn Flood  
Lawrence Gold

John D. Goldenberg  
William Goldman & Marynell Hadrych  
Ray Gonzales  
Thomas S. Graves  
Claire & Michael Hackett  
Michael Harabin  
Karen Hardcastle  
Erika Hassan  
Marcia & Paul Herman  
Nicholas Hormann  
Cheryl Howard  
Joel D. Hyatt & Susan E. Green  
Barbara Isenberg  
Marilyn Jacobs  
Martha R. Jones & Paul Zerella  
Erica Keeps  
Norman Koplof & Leslie Falick  
Michael & Cec Lehrer  
Karen & Walter Loewenstern  
Fred Manaster  
Celeste & Robert Marin  
Mary & James McElwain  
Virginia & John Merriam  
Kim Norris  
Gary Pearlson-in honor of Scott Willis  
Donna & Bruce Polichar  
Judith Reichman, MD  
Sonia Reznick  
Sidney & Allen Rishe  
Suzanne Rosentswieg  
Karen Rothenberg & Jeffrey Seltzer - in honor of Susan Loewenberg  
Ron Segall  
Patricia Seidenbaum  
Marilyn Silverman  
Marlene Sklar & Joel Moskowitz  
Dory & Isaac Soffer  
Ros & Simon Templeman  
Elizabeth & Vincent Tornabene  
Kathleen & Harold Vance  
Carolyn & Clay Vreeland  
Sandra Wignot  
Nicole & Carl Williams  
Camilla Meyer Winkler

Based on annual giving between 1/15/2020 and 1/15/2021. To report a misspelling or omission, please contact Vicki Pearlson at [vpearlson@latw.org](mailto:vpearlson@latw.org). Your gift is deeply appreciated by all of us here at L.A. Theatre Works, and any errors will be corrected in our next program.

*Thank you for supporting theatre in Los Angeles!*

# L.A. THEATRE WORKS

## BOARD OF DIRECTORS

Gary N. Jacobs, *President*  
Aviva Covitz, *Vice President*  
Vicki Pearlson, *Secretary*  
Alan Finkel, *Treasurer*

•

Annette Blum  
Hector Elizondo  
Sherry Bebitch Jeffe  
Eileen Lawrence  
Linda Lichter  
Susan Albert Loewenberg  
Raj Patel  
Karen Rothenberg  
Gary Scott  
Beegie Truesdale

## ARTIST ADVISORY COUNCIL

Edward Asner  
Rosalind Ayres  
Doris Baizley  
Ed Begley Jr.  
Emily Bergl  
Seamus Dever  
Sarah Drew  
Richard Dreyfuss  
Simon Helberg  
Martin Jarvis  
Stacy Keach  
Marsha Mason  
Richard Masur  
Alfred Molina  
Amy Pietz  
Larry Powell

David Rambo  
Charlie Robinson  
David Selby  
Josh Stamberg  
Eric Stoltz  
Susan Sullivan  
Jocelyn Towne  
JoBeth Williams  
Charlayne Woodard

## **L.A. Theatre Works Staff**

<i>Producing Director</i>	Susan Albert Loewenberg
<i>Managing Director</i>	Vicki Pearlson
<i>Producer</i>	Anna Lyse Erikson
<i>Marketing Director</i>	Fritz Meier
<i>Senior Radio Producer</i>	Ronn Lipkin
<i>Audio Sales Director</i>	Michele Cobb
<i>Creative Services Director</i>	Sam McCay
<i>Live Events Manager</i>	Stacey Martinez
<i>Bookkeeper</i>	Teri Allen
<i>Office Manager</i>	Cyndi Gonzales

*Publicity* Lucy Pollak Public Relations