

L.A.
THEATRE
WORKS

LATW

PROGRAM
2020/21 DIGITAL SEASON

SUSAN A. LOEWENBERG, PRODUCING DIRECTOR

A
HERCULE POIROT
MYSTERY

ALFRED MOLINA SIMON HELBERG

AGATHA CHRISTIE
THE MURDER ON THE LINKS

ADAPTED BY KATE McALL DIRECTED BY ANNA LYSE ERIKSON ORIGINAL MUSIC BY JOHN BIDDLE

VISIT US AT LATW.org

L.A.
THEATRE
WORKS

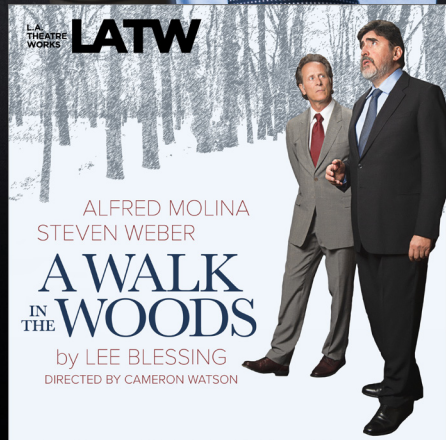
LATW

SUSAN A. LOEWENBERG, PRODUCING DIRECTOR

Alfred Molina in
A Walk in the Woods
by Lee Blessing

Now Available as CD or Digital

LATW.ORG



CAST

(in speaking order)

SIMON HELBERG.....Captain Hastings
JOCELYN TOWNE.....Cinderella, Marthe Daubreuil
ALFRED MOLINA.....Detective Hercule Poirot
DARREN RICHARDSON.....Multiple Roles
MATTHEW WOLF.....Hautet
EDITA BRYCHTA.....Francoise, Mrs. Renault
ANNA LYSE ERIKSON.....Leonie
KEVIN DANIELS.....Detective Giraud
JOANNE WHALLEY.....Madame Daubreuil
ADHIR KALYAN.....Jack Renault

Directed by Anna Lyse Erikson

Season funding provided by:

Alfred P. Sloan Foundation
Elizabeth & Louis Altman
California Civil Liberties Program (State Library)
City of Los Angeles, Department of Cultural Affairs
Patty Glaser & Sam Mudie
Marilyn & Barry Hinden
The John Logan Foundation/Desert Wolf Productions
Mike and Beth Kasser
Los Angeles County Department of Arts & Culture
National Endowment for the Arts
Debbie & Gregg Oppenheimer
Peter Glenville Foundation
The Ralph M. Parsons Foundation
The Rosalinde and Arthur Gilbert Foundation
Barbara Timmer and Catherine Glynn Benkaim
Jamie Wolf



The Murder on the Links was prepared for audio by Mark Holden for
The Invisible Studios, West Hollywood

© 2021 L.A. Theatre Works. All rights reserved.

Playwright's Note

'Mon ami, two people rarely see the same thing.'

—Hercule Poirot, *The Murder on the Links*

Like his creator, Hercule Poirot was not a fan of golf. A stickler for neatness and order, he found the layout of a golf course, with its random bunkers and uneven greens, disturbingly unsymmetrical. Those with a fondness for the sport may be disappointed to learn that despite the implication of the title, and the depiction of golfers happily swinging clubs on the cover of the paperback, Agatha Christie's second Poirot novel barely mentions golf in the story, with one notable exception. A golf course provides *'the scene of the crime'*, a now familiar phrase which was used for the first time in this book.

Golf was a recurring theme, however, in Agatha Christie's personal life. She was proposed to by her first suitor, Reggie Lucy, on Torquay Golf Course in Devon, on the eve of the first World War. It doesn't sound like the most romantic proposal. Reggie didn't want to rush into things, and was about to go back to the army, so he suggested that if they still felt the same way and hadn't met anyone else in two years' time when he returned, they would marry. Agatha reluctantly agreed, but had to break off the engagement shortly afterwards when she met and fell in love with Archie Christie, an officer in the Royal Flying Corps.

Agatha and Archie married on Christmas Eve, 1914. They spent their honeymoon night in The Grand Hotel, Torquay and on the 27th of December Archie returned to fight in France. They wouldn't see each other again until the war ended four years later. But while Archie was away, Agatha had another man in her life: Hercule Poirot. She'd started writing detective stories partly because her sister Madge bet her that she couldn't write a good one. At the time there were many Belgian refugees in England and Agatha thought that a Belgian refugee, a former policeman, would make an excellent main character for her story. Her first description of him reads:

Poirot was an extraordinary looking little man. He was hardly more than five feet, four inches, but carried himself with great dignity. His head was exactly the shape of an egg, and he always perched it a little on one side. His moustache was very stiff and military

She also described his walk as a '*rapid, mincing gait*', which David Suchet, who played Poirot in the long running ITV series, claims he achieved by practising walking with a penny coin clasped between his buttocks. Hercule Poirot would eventually appear in twenty-two novels, one play, over fifty short stories, and be a character in her life for almost half a century.

Agatha and Archie Christie didn't fare so well. After 14 years of marriage Archie fell in love with Nancy Neale, a fellow golfer. Archie had always been a very keen golfer; whereas Agatha was not. They divorced in 1928. As the years went by Agatha began to tire of the other man in her life too, privately calling Poirot '*a detestable, bombastic, tiresome, egocentric little creep.*' But her readers continued to adore him, and she felt a responsibility to give them what they wanted so she carried on writing, secretly penning a final Poirot novel ending with his demise, which she locked away in a safe. Poirot mysteries kept appearing for another twenty years until ill health forced her to give up writing. At that point the safe was opened, and in 1975 *Curtain* was published.

Agatha Christie died the following year. She remains the best selling novelist of all time; Poirot the only fictional character to have an obituary in the New York Times.

– Kate McAll, playwright/adaptor

Bios



EDITA BRYCHTA (*Mrs. Renuald, Francoise*) recently appeared in LATW's adaptation of E. M. Forster's *A Room With A View*, George Eliot's *Daniel Deronda*, and in Lillian Hellman's *Watch on the Rhine*. Most recently she played seven roles in the acclaimed BBC radio play *Me Cheetah: My Life In Hollywood*, starring alongside John Malkovich. She was born in Prague and raised in London. UK Theatre includes: *Daisy Pulls It Off* (London West End),

Ophelia in Hamlet (UK Regional), *Desdemona in Othello*, and the world premiere of Vaclav Havel's *Largo Desolato* directed by Tom Stoppard. US Theatre: Narrator in Leonard Bernstein's *The Kaddish* (Royce Hall). Selected TV/Film credits include: (US) *Princess Diana in Behind the Palace Doors*, *Murder She Wrote*, *The Rockford Files*, *Criminal Minds*, *Crime of the Century*, *Man on the Moon*, *Conspiracy Theory*, *Ice Age: Continental Drift*; (UK) *Taggart*, *Lovejoy*, *Gentlemen & Players* (2 seasons), *The Escape*, *Flying in the Branches*, *The Britoil Affair*, *Akumulator1* (acted in her native Czech), as well as *Cinq Filles A Paris* (acted in French). She has recorded a number of audio books for audible.com, including Jane Goodall's *Seeds of Hope*, *Memory's Last Breath*, and The New York Times Best Seller, *This Man Trilogy*, for which she was nominated for an Audie. Her passion has been swimming four times from Alcatraz, three times the length of the Golden Gate Bridge and twice from the Golden Gate Bridge to Bay Bridge (10K). Graduate of LAMDA.



KEVIN DANIELS (*Detective Giraud*) plays 'Wayne Fontaine' on the upcoming show *The Big Leap* on Fox, and just completed a season long arc on NBC's short lived family drama *Council of Dads*. Indie film lovers can catch Kevin in the two new iTunes streaming films *a Typical Wednesday* and *Poor Greg Drowning*. Other notable Film and Television credits include: *Sirens*, *Modern Family*, *Atypical*, *Why Women Kill*, *Coop and Cami Ask the World*, *The*

Oroville, *Law and Order*, *Ladder 49*, *AJ and the Queen*, *One Christmas Eve*, *The Island*, *Hollywood Homicide*, and *Their Eyes Were Watching God*. Kevin got his start in the Lincoln Center production of *Twelfth Night*,

starring Helen Hunt, Kyra Sedgwick, and Paul Rudd. Kevin later returned to Broadway to play the title role of Magic Johnson in *Magic/Bird* directed by Thomas Kail. Kevin is a graduate of The Juilliard Drama Division and currently resides in Los Angeles.

ANNA LYSE ERIKSON (*Leonie*) see Director's bio



SIMON HELBERG (*Captain Arthur Hastings*) was most recently seen in the Paramount Pictures feature *Florence Foster Jenkins* for director Stephen Frears opposite Meryl Streep and Hugh Grant. Simon has received rave reviews for his performance, receiving the Auteur Award at this year's Night of the Stars Tribute at the San Diego International Film Festival, and being nominated for the Golden Globe Award for Best Supporting Actor in a Motion

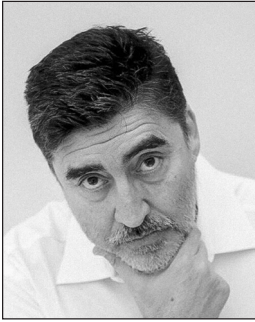
Picture. *We'll Never Have Paris*, Simon's feature writing and directorial debut, premiered at SXSW in the Spring of 2014, and received glowing reviews. The film was distributed for limited release in theaters by MGM. Simon and his wife, Jocelyn Towne, co-directed the feature in which they fictionalize the true-life romantic struggles they faced in their own relationship. Simon starred in CBS' smash hit *The Big Bang Theory*, which was also nominated for the Screen Actors Guild Award for Outstanding Performance by an Ensemble in a Comedy Series.



ADHIR KALYAN (*Jack Renauld*) can currently be seen in the role of 'Al' in the new CBS sitcom *United States of Al*. Recently, he appeared in Amazon Studios' feature film *Chemical Hearts*, starring Lili Reinhart and Austin Abrams, as well as Chris and Nick Riedell's independent film *A Nice Girl Like You* alongside Lucy Hale, and had a recurring role in the 5th Season of *Arrested Development*. Prior, he starred in the FOX series *Second Chance*, and recurred in the Jill

Soloway Amazon series *I Love Dick* with Kevin Bacon and Kathryn Hahn. Adhir is also known for his scene-stealing series regular role of 'Timmy' in *Rules of Engagement* for 5 seasons, the fish out of water 'Raja' on the critically acclaimed series *Aliens in America*, and the memorable 'Dr. Raj Paresh' on *Nip/Tuck*. Adhir's additional feature credits include *Paul Blart: Mall Cop* and *Paul Blart: Mall Cop 2*, *Youth in*

Revolt opposite Michael Cera, *No Strings Attached* with Natalie Portman and Ashton Kutcher, the Jason Reitman directed feature *Up in the Air* with George Clooney, *High School* opposite Adrien Brody, and Will Gluck's *Fired Up*.



ALFRED MOLINA (*Detective Hercule Poirot*) is a London-born actor with a distinguished career in film, TV, and the stage. His most recent Broadway appearance was in the highly acclaimed *Red*, by John Logan, for which Alfred received his third Tony nomination. London credits include: *Accidental Death of an Anarchist*, *The Taming of the Shrew* (RSC), *Speed-the-Plow* and *Night of the Iguana* (National Theatre) and in 2018, a revival of *Red* for the

Michael Grandage Company. Alfred made his Broadway debut in Brian Friel's *Molly Sweeney*. He received Tony nominations for his portrayal of 'Yvan' in *ART*, and for his 'Tevye' in the 2004 revival of *Fiddler on the Roof*. Alfred has worked extensively in the theatre scene in Los Angeles with two productions of *The Cherry Orchard* (Odyssey Theatre and Mark Taper Forum). In 2017 he appeared in *Long Day's Journey into Night* at the Geffen Playhouse, and the Pasadena Playhouse Christmas production of *Miracle on 34th Street*. His film work includes: *Raiders of the Lost Ark*, *Boogie Nights*, *Maverick*, *Prick Up Your Ears*, *Chocolat*, *An Education*, *Spiderman 2*, *The Da Vinci Code*, *Sorcerer's Apprentice*, *Not Without My Daughter*, *As You Like It*, *The Tempest*, *Love is Strange*, *Front Runner*, and *Vice*. He played Diego Rivera in Julie Taymor's *Frida*, for which he received BAFTA and SAG nominations. He received the BBC Radio Drama Award in 2016 for his performance as 'Eddie Carbone' in Arthur Miller's *A View from the Bridge*. He is a regular performer with L.A. Theatre Works. Past productions have included *True West*, *Copenhagen*, and *The Lion in Winter*. Alfred is delighted to be back continuing his association with LATW.



JOCELYN TOWNE (*Cinderella*, *Marthe Daubreuil*) is a writer, director, producer, and actress from Santa Monica, California. Jocelyn is best known for *We'll Never Have Paris*, which she directed and produced with her husband Simon Helberg. Jocelyn also wrote, directed, and starred in *I Am I*, about a woman who meets her long-lost father at her mother's funeral, alongside Simon Helberg and Jason Ritter. Jocelyn and Simon also created and

produced the Epix original series *Elvis Goes There*, featuring acclaimed critic Elvis Mitchell interviewing major directors in the cities that inspired them most. On stage, Jocelyn co-starred in *The Little Foxes* at Antaeus Theatre Company, which won LADCC Awards for Best Revival and Best Ensemble. She recently appeared in a recurring role on AMC's *Lodge 49* and in a guest spot opposite Alan Arkin on Netflix's Golden Globe-winning *The Kominsky Method*. Jocelyn has also appeared in Margaret Whitton's *A Bird of the Air*, Barbara Kopple's *Havoc*, and *Gilmore Girls* on the CW.



JOANNE WHALLEY (*Madame Daubreuil*) is an English theatre, television, and film actress, known for *Scandal*, *The Man Who Knew Too Little*, *Navy Seals*, *Willow*, and *Pink Floyd The Wall*. Other film credits include *Shattered*, *Dance with a Stranger*, and *No Surrender*. Television credits include Mary James in Sky's *Tin Star*, Sister Maggie in Marvel's *Daredevil*, Margaret in Starz's *The White Princess*, Vanozza Cattaneo on Showtime's *The Borgias*, Princess Sophie

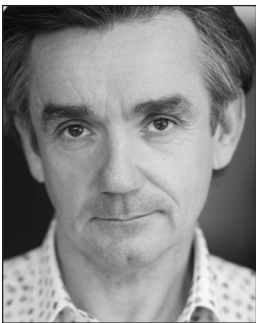
Grimaldi on CW's *Gossip Girl*, Sarah Hughes/Marjorie Dawson on YTV's *How We Used to Live*, Angela Read on YTV's *Emmerdale*, and Pamela Graham on ITV's *Coronation Street*. Television miniseries credits include Rheda in ITV's *Beowulf: Return to the Shieldlands*, Katherine of Aragon in BBC's *Wolf Hall*, Aunt Patience in BBC's *Jamaica Inn*, Scarlett O'Hara in TF1's *Scarlett*, Beatrice in Channel 4's *A TV Dante*, Nurse Mills in BBC's *The Singing Detective*, Emma Craven in BBC's *Edge of Darkness*, and Ingrid Brown/Rothwell in Granada Television's *A Kind of Loving*. Off-Broadway theatre credits include Geraldine Barclay in *What the Butler Saw* (N.Y.C. Center Stage).



MATTHEW WOLF (*Hautet*) has previously appeared with LATW in *A Room With A View*, *Salomé*, *The Liar*, *Romeo in Romeo and Juliet*, *Hamlet*, *Dracula*, *The School For Scandal*, *The Importance of Being Earnest*, *The Life of Galileo*, *Bunbury*, *The Real Thing*, *Gross Indecency: The Three Trials of Oscar Wilde*, *She Stoops to Conquer*, as Noël Coward in Coward's sketch *Design For Rehearsing*, and a number of others. Notable London stage: Harry in *When Harry Met Sally*,

the title role in *Macbeth* (Old Sorting Office), *The Caretaker*, *The Private Ear*, *Now There's Just the Three of Us*, *Les Liaisons Dangereuses*, *A Midsummer Night's Dream*, and Pinter's *Celebration*. LA Stage: Jack in *The Importance of Being Earnest*, Peter Shaffer's *White Lies*, and as the young King George III in *Charlotte Sophia*. TV includes: *Game of Thrones*, Jeffrey Stuart on *The Royals*, *Scandal*, *24*, *Major Crimes*, *Hart of Dixie*, *Days of Our Lives*, *Eastenders*, *Grange Hill*, *Family Affairs*, and others. Film includes: *Skyscraper*, *Girl with the Dragon Tattoo*, *Pirates of the Caribbean 3*, *You Don't Mess with the Zohan*, *Skid Marks*, the French film *La Premiere* and *Mars Needs Moms*. Matthew's voice work includes: critically acclaimed radio adaptations of P.G.

Woodhouse's *Something Fresh* and *Summer Lightning*, and Ian Fleming's *Goldfinger*, 35 different characters in the radio sitcom *Nebulous* and all five Rivetti Brothers in Alan Ayckbourn's *A Small Family Business*. He played Thor in two animated features for Marvel. Matthew trained at the London Centre for Theatre Studies.



DARREN RICHARDSON (*Multiple Roles*) has appeared in countless L.A. Theatre Works productions. Highlights include the national tours of *Judgement at Nuremberg*, *In the Heat of the Night*, *Pride and Prejudice*, *The Graduate*, and LATW's China tour of *Top Secret: The Battle for the Pentagon Papers*, the first American play performed at the Beijing National Grand Theatre. Darren's long association with Jarvis and Ayres productions has led

to over 40 radio plays for the BBC. TV work includes *Hollywood*, *Hawaii Five-0*, *This Is Us*, *The Last Tycoon*, *Great News*, *Lost*. Recent films include: *The Persian Connection*, *The Meanest Man in Texas*, and *Velvet Buzzsaw* opposite Jake Gyllenhaal. His next film is the eagerly awaited Glenn Danzig vampire western! His voice talents are often heard in

films and TV shows such as *LEGO 2*, *Black Panther*, *Mad Max*, *Transformers*, *Shrek*, *Guardians of the Galaxy*, and the *Pirates of the Caribbean* franchise.



KATE MCALL (*Adaptor*) is a Sony Gold award-winning producer and director with over 30 years' experience at the BBC. She began her career making history documentaries and literary features for BBC Radio 4, before turning to drama. Recent BBC productions include *Me Cheeta*, *My Life in Hollywood* adapted by Costa Prize-winning author Stef Penney and starring John Malkovich, *Life At Absolute Zero* with *Eats, Shoots and Leaves* author Lynne Truss, an

adaptation of Nobel Prize laureate Malala Yousafzai's latest book, *We Are Displaced*, and an adaptation of Kilvert's *Diary*, the journal of a Victorian country Curate. Kate collaborated with L.A. Theatre Works on several previous projects including *La Bête*, *Arthur Miller-A Life*, *Daniel Deronda*, *A Room with A View* with Julian Sands, and *Mary Shelley's Frankenstein*. She has her own audio company: rhiannonmedia.com.



AGATHA CHRISTIE (*Author*) is the best-selling author of all time. She wrote 66 crime novels and story collections, fourteen plays, and six novels under a pseudonym in Romance. Her books have sold over a billion copies in the English language and a billion in translation. According to Index Translationum, she remains the most-translated individual author, having been translated into at least 103 languages. She is the creator of two of the most enduring

figures in crime literature-Hercule Poirot and Miss Jane Marple-and author of *The Mousetrap*, the longest-running play in the history of modern theatre.

ANNA LYSE ERIKSON (*Director, Senior Producer*) is Producer at L.A. Theatre Works, having served as senior producer, casting director, and literary manager for over 100 L.A. Theatre Works live recordings, in-studio recordings, and tours. Producing highlights: *A Walk in the Woods* (Earphones Award 2019, Audiofile Magazine's Best Audio Books 2019), *Disgraced* (Audie Award Nominee 2018), and the critically acclaimed 2014-15 National Tour of *In the Heat of the Night*. Directing credits include: *Mary Shelley's Frankenstein* (L.A. Theatre Works), *Circle Mirror Transformation* (The Workroom), *A Night with Tennessee Williams* (University of Colorado-Boulder), *Rose* (University of Missouri-Columbia). She was previously a founder and Artistic Director of VAGABOND, Director of Development for the Morgan-Wixson Theatre, Director of Outreach and Development for Independent Actors Theatre, and a casting director and producing consultant for various commercial, film, theatre, and audio drama projects. Anna Lyse received a B.A. in Theatre Performance from the University of Missouri-Columbia, and an M.A. in Theatre History, Theory, and Criticism from the University of Colorado-Boulder, both with highest honors.

SUSAN ALBERT LOEWENBERG (*Producing Director*) is founder and Producing Director of L.A. Theatre Works, a non-profit media arts and theatre organization. Ms. Loewenberg has produced award-winning radio dramas, plays, and films in Los Angeles, New York, Chicago, and London. Under her supervision, LATW has created the largest library of plays on audio in the world, garnering numerous awards from the Corporation for Public Broadcasting, the Writers Guild, The American Library Association, Publishers' Weekly, and others. Ms. Loewenberg also serves as host and is the Executive Producer of LATW's nationally distributed syndicated radio series, "L.A. Theatre Works," broadcast on NPR stations nationwide. A graduate of Sarah Lawrence College, she has served on innumerable boards and panels, including the National Endowment for the Arts, California Arts Council, The Fund for Independence in Journalism in Washington D.C., and was co-chair of the League of Producers and Theatres of Greater Los Angeles. From 1996-2002, Ms. Loewenberg served during the Clinton administration on the Board of Directors for Federal Prison Industries, a presidential appointment, and served for several years as a member of the regional panel of the President's Commission on White House Fellows. She is currently a member of the Board of Directors of The Center for Public Integrity and a Fellow of the Los Angeles Institute for the Humanities at USC. Ms.

Loewenberg is the author of a number of articles that have appeared in *American Theatre Magazine*, *The Los Angeles Times*, and various professional journals.

RONN LIPKIN (*Senior Radio Producer*) After graduating from Haverford College with a BA in Music History, Ronn worked as a staff announcer and production director for WYSP-FM in Philadelphia, helping to create the legendary rock station's distinctive sound. He later moved to KLSX-FM in Los Angeles and worked as a staff announcer, recording engineer and producer, creating award-winning radio commercials for national and regional clients. For L.A. Theatre Works, he serves as music supervisor for live productions, lead podcast and radio producer, and curator for the company's audio library. He is also an editor and creative consultant for a number of leading audiobook publishers.

MARK HOLDEN (*Studio Owner*) has over two decades of experience producing, recording and mixing various creative projects in studios, on sets, and on live stages. He has designed, recorded and mixed over 250 plays, live shows and national tours for L.A. Theatre Works, the BBC and dozens of production houses, arts organizations and podcast companies. As a composer and producer, Mark understands that communication and comfort are essential to a creative space, which is why he created The Invisible Studios in West Hollywood, CA. This commercial production and post-production environment is home base for the many projects overseen by Mark and his team. Using his adapting, consulting and project management experience, he helps both new and established dramas take flight in the audio drama renaissance. Most recently Mark directed and produced *Dust: Horizons* for Gunpowder & Sky. He has composed for radio, film, and television such as scoring the award-winning feature film *Out in the Dark*. Additionally, he has written, produced, and engineered for several genres of music and worked with some of the biggest names in commercial and creative voice talent. Mark currently serves as board chair of Rogue Artists Ensemble: rogueartists.org. Learn more about Mark and his team at: theinvisiblestudios.com.



NEIL WOGENSEN (*Recording Engineer*) is a Los Angeles based recording engineer, music producer, and sound designer with over 7 years of experience. From producing full length albums to sound designing feature length audio dramas, he believes in capturing the truth in every story.

JOHN BIDDLE (*Original Music Composer*) is a UK-based composer and sound designer, working in theatre, radio, podcast and film. His music and sound design have been featured in productions including LATW's *Frankenstein* (adapted by Kate McAll and directed by Anna Lyse Erikson), the podcast *Dead Honest* (nominated for the 2021 *British Podcast Awards*), and countless stage productions throughout the UK including *Oliver Twist*, *Dracula*, *A Christmas Carol* and more. John is an Associate Artist of The Egg, a dedicated children's theatre attached to the Theatre Royal Bath. Visit his website at johnbiddlemusic.co.uk

JEFF GARDNER (*Foley Artist*) has performed live sound effects with LATW over the last eight seasons. Highlights include: *Amadeus*, *American Buffalo*, *As You Like It*, *Under Milk Wood*, *August: Osage County*, *The Motherf**ker with the Hat* as well as touring nationally with *Judgment at Nuremberg*. Jeff is an actor/sound designer born and raised in Los Angeles. Sound design credits: include *Native Son*, *Cat on a Hot Tin Roof*, *Picnic* (Antaeus Theatre Company); *Punkplay*, *Trevor* (Circle X Theatre); *American Saga: Gunshot Medley*, *Les Blancs*, *Honky* (Rogue Machine); *The Wolves*, *The Cake*, *Dry Land* (Echo Theater), as well as *Buried Child*, *A Raisin In The Sun*, *The Madwoman of Chaillot* (A Noise Within). Acting credits include: *The Liar*, *Macbeth*, *King Lear* (Antaeus Theatre Company); *Little Women* (Kennedy Center, National Tour); *Henry V* with Harry Hamlin (The Shakespeare Theatre); *Our Town* with Calista Flockhart, and *The Seagull* with Gwyneth Paltrow and Christopher Walken (Williamstown Theatre Festival). Jeff has also toured with his award-winning solo show, *Kill Your Television* for the Seattle Fringe and Hollywood Fringe Festivals.

Special Thanks:

CHARLES CARROLL (*Sound Designer, Editor, and Mixer*) for The Invisible Studios, West Hollywood

ANDREA ALLMOND (*Sound Designer*)

TITO H. SALAZAR (*The Invisible Studios Coordinator*)
Certified Covid-19 Compliance Officer.

LATW Supporters

Platinum Circle (\$100,000+)

Alfred P. Sloan Foundation

Gold Circle (\$50,000 - \$99,999)

The Ahmanson Foundation

California Civil Liberties Program (State Library)

Los Angeles County Department of Arts & Culture

NoVo Foundation

Executive Producers (\$25,000 - \$49,999)

California Arts Council

City of Los Angeles, Department of Cultural Affairs

Beth & Michael Kasser

National Endowment for the Arts

The Ralph M. Parsons Foundation

Producers (\$10,000 - \$24,999)

Anonymous

Campizondo Foundation

Marcy Carsey

Patty Glaser & Sam Mudie

Heather & Paul Haaga

Robin & Gary Jacobs

Shubert Foundation

Co-Producers (\$5,000 - \$9,999)

Mary K. & Thomas S. Bagley Foundation

Sherry Bebitch Jeffe

Lillian Lovelace

Associate Producers (\$2,500 - \$4,999)

Elizabeth & Louis Altman

Dan & Rae Emmett, Emmett Foundation

Sharon & Steven Erikson

The Rosalinde and Arthur Gilbert Foundation

Peter Glenville Foundation

Cragg Hines & Robert B. Crane—in memory of Doug Jeffe

and in honor of Sherry Bebitch Jeffe

Eileen Lawrence

Linda Lichter & Nick Marck and Lichter, Grossman, Nichols, Adler,

Feldman & Clark, Inc.

Susan Albert Loewenberg & Ezra Suleiman

Debbie & Greg Oppenheimer

Ariane & Lionel Sauvage

Beegie Truesdale & Bill Carrick

Williams/Pasquin Trust

Sustaining Patrons (\$1,000 - \$2,499)

Anonymous

Daniel Castellaneta & Deborah Lacusta

Tallie & George Dennis

Elisabeth Familian

Alan Finkel

Marilyn & Barry Hinden

Simon Helberg & Jocelyn Towne

Shvetal & Raj Patel

Beverly & Norman Pine

David Rambo & Ted Heyck

Jamie Rosenthal Wolf, Rick Rosenthal

and Nancy Stephens/The Rosenthal Family Foundation

Bill Schneider

Tony Silbert/Silbert Consulting

Valerie Sopher

Andrea Weiss & Dr. Jerry Whitman

Dan White

Ensemble Patrons (\$500 - \$999)

Debra & Dave Alpert
David Auburn
Jim Bagley
Barbara Berg
Judith Blumenthal
David Braun
Gina & John Despres
Sarah Dusseault
Nancy Englander
Eric Engel & Ronda Fox
The Finzen-Clark Family Foundation
Carrie Hidding/teamCFO
Mark Holden
Martin Jarvis & Rosalind Ayres
Peter Kazaras & Armin Baier
The Keach Family
Dr. Leonard & Stella S. Kleinrock
Raquel & Bert Lewitt
Valerie & Dr. Jack Melmed
Anne & Barry Munitz
Sarah Morris & John Papadopoulos
Micheline Nanterre
Judith Pacht & Dr. H. Kenneth Fisher
Vicki Pearlson
Joyce Rey
Dr. Donald Ross & Patti Ross—in honor of Susan Loewenberg
& entire LATW staff
Steven Ross & Linda Kent
David & Chip Selby
Christina Snyder & Marc Seltzer
Joan & Robert Stern
Taffy Stern
Sophie Suleiman
Sandy & Jon Willen—in honor of Susan Loewenberg
January & Edward Woods

Patrons (\$250 - \$499)

Anonymous

Rick Albert

Paula Brand

Laurie Cohn

Diane Corwin Okarski & David Okarski

Leilani Duke

Betsy & Bob Eaton-in memory of Doug Jeffe

Nancy & George Franko

Cindy & Ron Furst

Suzanne Gallant

Nan & Alan Goodman

Judy & Jeff Harris

Jane Kaczmarek

Cathryn & Barry Kaye

Sharon Keith

Barbara & Bob Klein

Yvette & Ellis Landau

Paula A. Levine & Bernard D. Beitman

Lawrence Lokman & Rhonda Seaton—In memory of Doug Jeffe

Mr. & Mrs. Gary Marsh

Allison Morse & Jeffrey Masters

Diane Corwin Okarski & David Okarski—In memory of

Norman Corwin & Katherine Locke Corwin

Michael R. Oppenheim

Jennifer N. Owens-Ornellas & Jay T. Ornellas

Lee Ramer

Ron Rapoport

Allen Resnick

Gayle & Lee Rodgers

Dr. Bushra Rothstein

Peggy Saferstein

Helene Smookler

Louise Spitzer

Tom Virtue

Dorothy Wolpert

Friends (\$100 - \$249)

Florence C. Agcawili
Ellen Albert & David Griggs
Anonymous
Paul Ashkenaz
Joan August
June Bartczak
Joan Barton
Frank Belz & Judy Kerner
Ahuva Braverman
Deidre Bronchick
Constance Burg
Lynn Christian
Michele Cobb
Charles L. Cron
Christy Daily & Robert Fajardo
Judith De Luce
Jerry and Patty Dicker
Anne Dougherty & David Dobrikin
Rena & Peter Falk
John D. Goldenberg
William Goldman & Marynell Hadrych
Ray Gonzales
Thomas S. Graves
Karen Hardcastle
Marcia & Paul Herman
Nicholas Hormann
Cheryl Howard
Joel D. Hyatt & Susan E. Green
Barbara Isenberg
Jane Jelenko
Martha R. Jones & Paul Zerella
Steven Llanusa
Karen & Walter Loewenstern
Celeste & Robert Marin
Rev. Dr. Laura McKnight
Rozann Newman
Susana Nierlich
Kim Norris
Gary Pearlson—in honor of Scott Willis
Donna & Bruce Polichar
Judith Reichman, MD

David Rodes
Suzanne Rosentswieg
Karen Rothenberg & Jeffrey Seltzer—in honor of Susan Loewenberg
Marlene Sklar & Joel Moskowitz
Dory & Isaac Soffer
Donald Tamaki
Ros & Simon Templeman
Elizabeth & Vincent Tornabene
Carolyn & Clay Vreeland
Susan L. Wampler & Stan Wedeking
Nicole & Carl Williams
Camilla Meyer Winkler
Sallie Zemlin-Kisor and Robert Kisor

Based on annual giving between 6/15/2020 and 6/15/2021. To report a misspelling or omission, please contact Vicki Pearlson at vpearlson@latw.org. Your gift is deeply appreciated by all of us here at L.A. Theatre Works, and any errors will be corrected in our next program.

Thank you for supporting theatre in Los Angeles!

L.A. THEATRE WORKS

BOARD OF DIRECTORS

Gary N. Jacobs, *President*
Aviva Covitz, *Vice President*
Vicki Pearlson, *Secretary*
Alan Finkel, *Treasurer*

•

Annette Blum
Hector Elizondo
Sherry Bebitch Jeffe
Eileen Lawrence
Linda Lichter
Susan Albert Loewenberg
Raj Patel
Karen Rothenberg
Gary Scott
Beegie Truesdale

ARTIST ADVISORY COUNCIL

Edward Asner
Rosalind Ayres
Doris Baizley
Ed Begley Jr.
Emily Bergl
Seamus Dever
Sarah Drew
Richard Dreyfuss
Simon Helberg
Martin Jarvis
Stacy Keach
Marsha Mason
Richard Masur
Alfred Molina
Amy Pietz
Larry Powell

David Rambo
Charlie Robinson
David Selby
Josh Stamberg
Eric Stoltz
Susan Sullivan
Jocelyn Towne
JoBeth Williams
Charlayne Woodard

L.A. Theatre Works Staff

<i>Producing Director</i>	Susan Albert Loewenberg
<i>Managing Director</i>	Vicki Pearlson
<i>Producer</i>	Anna Lyse Erikson
<i>Marketing Director</i>	Fritz Meier
<i>Senior Radio Producer</i>	Ronn Lipkin
<i>Audio Sales Director</i>	Michele Cobb
<i>Creative Services Director</i>	Sam McCay
<i>Live Events Manager</i>	Stacey Martinez
<i>Bookkeeper</i>	Teri Allen
<i>Office Manager</i>	Cyndi Gonzales

Publicity Lucy Pollak Public Relations



JOIN US

GIVE TO L.A. THEATRE WORKS

Your gift will bring theatre to the World...

Support live shows in L.A. and on tour in the U.S. and internationally. Help fund our free weekly radio show, podcasts and streaming, heard across the U.S., in China, and worldwide. Donate a title to your community library and give free downloads from iTunes, Google Play and our website.

...and to the Classroom

Give free recordings and curricular materials to thousands of students across the country. Help us develop apps, databases and other digital teaching tools that use theatre to teach English, history, science and more at middle, high school and university levels.

Visit LATW.org/join to learn more about the perks of annual membership, or to make a general tax-deductible donation.

Customized Giving and Sponsorships

For information on individual customized giving and business sponsorships, please contact our Development Department at 310-827-0808 x231.

Contributions are tax deductible to the extent allowed by law. L.A. Theatre Works is a non-profit 501(c)(3) organization.

Fed ID# 95-3181653

L.A. THEATRE WORKS

Susan Albert Loewenberg, Producing Director

L.A.
THEATRE
WORKS

LATW

SUBSCRIBE TO OUR PODCAST!

RELATIVITY SERIES

SCIENCE-THEMED PLAYS

L.A. Theatre Works and the Alfred P. Sloan Foundation present
The Relativity Series — stories about science as a thoroughly *human* endeavor.



Alfred P. Sloan
FOUNDATION

Generously supported by the Alfred P. Sloan Foundation,
bridging science and the arts in the modern world.



npr one™

SUBSCRIBE WHEREVER YOU GET YOUR PODCASTS

